

# Ontario Palliative Care Network



## *Integrated Hospice Palliative Care Regional Program Update*

July 5th, 2016

---

## Objectives

1. Provide an update about the Ontario Palliative Care Network (OPCN) and the associated enhancements of the WW IHPC Regional Program
2. Provide an overview of the 2016/17 strategic priorities of the WW IHPC Regional Program
3. Discussion / Q&A



# Ontario Palliative Care Network Background

## THE PATHWAY TO CHANGE IN ONTARIO

### October 2014

The Steering Committee tasked CCO & the LHINs with developing a business plan to propose the creation of a new provincial structure to address palliative care priorities

### Oct 2014- January 2015

Developed the business plan:

- Iterative process, involving multiple engagements with key partners
- Building on work already underway by various stakeholders

### February 2015

The business case was shared with the Deputy Minister, and a formal plan was submitted for consideration

**Creation of a New  
Provincial Network  
for Palliative Care**

**Note:** Content adapted from 2016 OPCN slides and communications materials



# Ontario Palliative Care Network Background

## **Establishment of the Ontario Palliative Care Network**

In March 2016, the OPCN was officially launched. It introduces a new governance structure for palliative care accountable to the Ministry of Health and Long-Term care, under the leadership of the Local Health Integration Networks (LHINs), CCO, Health Quality Ontario, and Quality Hospice Palliative Care Coalition of Ontario.

**Note:** Content adapted from 2016 OPCN slides and communications materials



# Ontario Palliative Care Network Background

## **Establishment of the Ontario Palliative Care Network**

The OPCN will work closely with the ministry to ensure its work supports and aligns with the Ministry of Health and Long-Term Care's *Patients First: A Roadmap to Strengthen Home and Community Care*, which highlights a commitment to improved access and equity in palliative and end-of-life care at home and in the community.

**Note:** Content adapted from 2016 OPCN slides and communications materials



# Ontario Palliative Care Network Mandate



## **Be a principal advisor**

to government for  
quality, coordinated,  
palliative care in Ontario



## **Be accountable**

for quality improvement, data  
and performance measurement  
and system level coordination of  
palliative care in Ontario

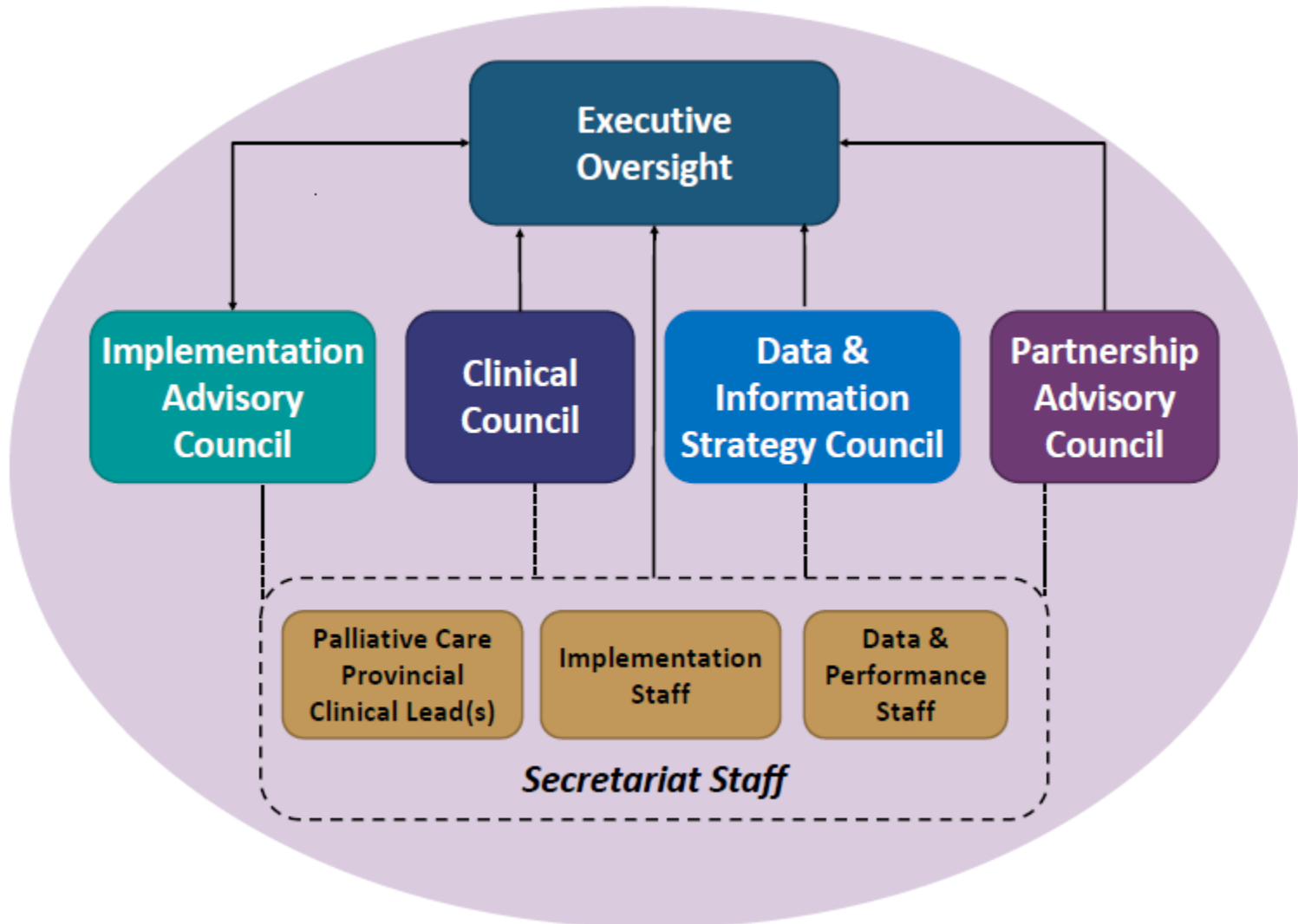


## **Support regional implementation**

of high-quality, high-value  
palliative care



# Ontario Palliative Care Network Governance Structure



**Note:** Content adapted from 2016 OPCN slides and communications materials

Waterloo Wellington  
Integrated Hospice  
Palliative Care



Ontario Palliative Care Network

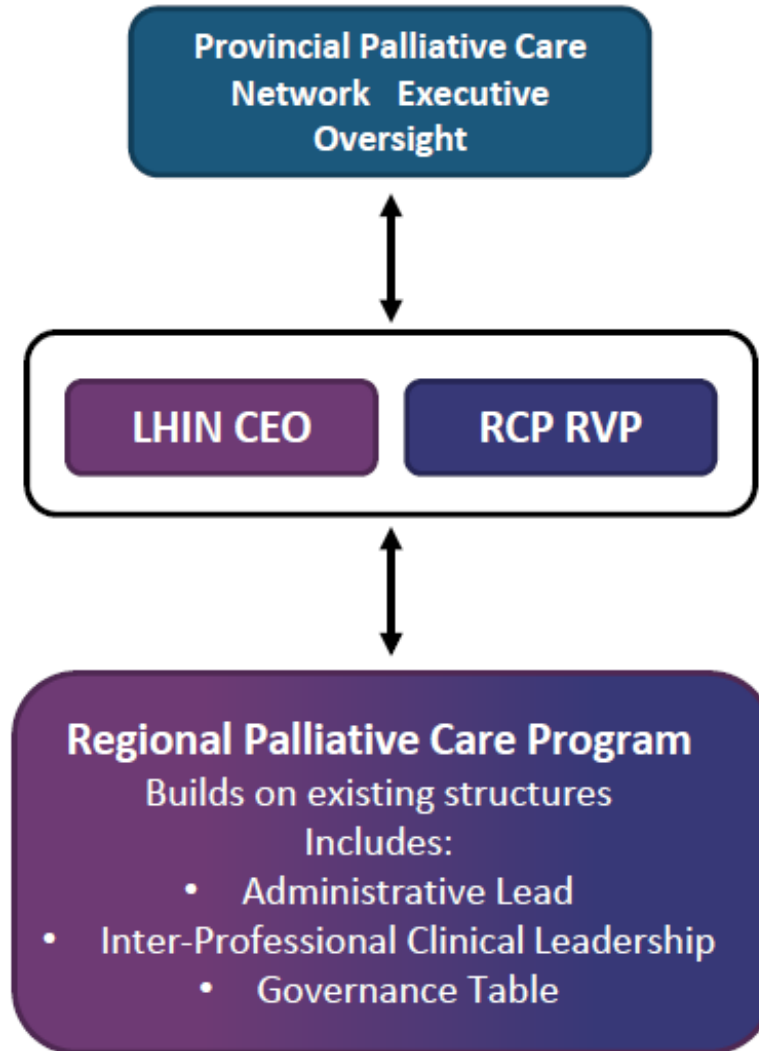
# Regional Palliative Care Programs



# Ontario Palliative Care Network



## Regional Palliative Care Programs





# Ontario Palliative Care Network

## Administrative Lead

### Key Functions

- Lead system design & strategic capacity planning and make recommendations regarding strategic investments
- Work in close partnership with the 'Regional Clinical Co-Leads' to achieve regional program deliverables
- Ensure activities within the regional care system are coordinated and contributing to system strategic goals
- Develop & maintain strategic collaborative relationships / partnerships
- Facilitate knowledge transfer of provincial hospice palliative initiatives and strategies to regional stakeholders and act as a voice of the WW IHPC Regional Program at provincial tables



# Ontario Palliative Care Network **Clinical Co-Lead Positions**

0.2 FTE Physician Clinical Co-Lead

0.2 FTE Non-Physician Clinical Co-Lead



# Ontario Palliative Care Network **Clinical Co-Lead Positions**

## **DRAFT Role Description**

- Work in close partnership with their Regional Clinical Co-Lead counterpart and their Regional Palliative Care Network Director to achieve regional deliverables
- Work collaboratively with the other Regional Clinical Co-Leads, and the Provincial Clinical Co-Leads to align priorities, accountabilities and deliverables
- Participate as an active member of the WW IHPC Council to facilitate regional planning, palliative care network development, performance measurement, and quality process improvement



# Ontario Palliative Care Network **Clinical Co-Lead Positions**

## **DRAFT Role Description**

- Promote and strengthen collaboration
- Work closely with regional partners to develop yearly hospice palliative care education plans and ensure a standardized approach to education is being employed across the region
- Implement OPCN Clinical Advisory Council recommendations for clinical improvements
- Build health service provider skills to increase primary level hospice palliative care capacity at the local level



# Ontario Palliative Care Network **Clinical Co-Lead Positions**

## **DRAFT Role Description**

- Facilitate the development/review /implementation of WW IHPC quality initiatives in alignment with regional work plan priorities and OPCN directions
- Build health service provider skills to increase primary level hospice palliative care capacity at the local level
- Facilitate knowledge transfer of provincial hospice palliative care initiatives and strategies to stakeholders throughout the region and act as a voice of the WW IHPC at provincial tables
- Participate in provincial & regional committees

## Summary - Year 1 OPCN Priorities

- Implement common elements of the RPCPs
- Recruit Clinical Co-Leads (0.2 FTE Physician, 0.2 FTE Non-Physician)
- Participate in Phase 2 capacity planning
- Participate in provincial scorecard reporting & implement standardized palliative quality metrics
- Examine, integrate & expand current palliative care services at sub-region levels

## PALLIATIVE - INTEGRATED CLINICAL PROGRAM METRICS

Area/Facility	% Palliative Patients Discharged Home with Support	% Palliative Patients Seen in RCC Within 2 Weeks of Referral	% Patient Days that are ALC Awaiting a Palliative Bed	CCAC Palliative Patients Who Died in Preferred Place of Death	CCAC Palliative Patients With an Active Most Responsible Physician	% Visiting ED Within 2 Weeks of Death	% ED Revisits Within 30 Days of Acute Palliative Discharge	CCAC Home Care Wait Times (days)	% Readmissions Within 30 Days of Acute Palliative Discharge
Sector	Acute	Cancer Care	All Inpatient	Community	Community	Community	Acute	Community	Acute
2015/16 Target	-	-	-	-	-	-	-	-	-
LHIN Rank	2	8	N/A	N/A	N/A	N/A	N/A	N/A	N/A
<b>Aggregate WW Performance</b>	<b>90.6%</b>	<b>69.3%</b>	<b>0.4%</b>	<b>84.1%</b>	<b>92.6%</b>	-	-	-	-
<b>Cambridge, North Dumfries Area</b>	<b>92.3%</b>	-	<b>1.1%</b>	-	-	-	-	-	-
Cambridge Memorial Hospital	92.3%	-	1.1%	-	-	-	-	-	-
<b>Guelph Area</b>	<b>100.0%</b>	-	<b>0.2%</b>	-	-	-	-	-	-
Guelph General Hospital	100.0%	-	0.8%	-	-	-	-	-	-
St. Joseph's Health Centre Guelph	-	-	0.0%	-	-	-	-	-	-
Homewood Health Centre	-	-	0.0%	-	-	-	-	-	-
<b>Kitchener, Waterloo, Woolwich, Wellesley, Wilmot Area</b>	<b>88.0%</b>	-	<b>0.5%</b>	-	-	-	-	-	-
Grand River Hospital	88.4%	69.3%	0.5%	-	-	-	-	-	-
St. Mary's General Hospital	87.2%	-	0.3%	-	-	-	-	-	-
<b>Wellington Area</b>	-	-	<b>0.1%</b>	-	-	-	-	-	-
Groves Memorial Hospital	-	-	-	-	-	-	-	-	-
North Wellington Health Care	-	-	-	-	-	-	-	-	-
Most Recent Reporting Period	Q2 2015-16	Q3 2015-16	Q3 2015-16	Q4 2015-16	Q4 2015-16				



**Do you have any questions about the OPCN or the associated evolution of the WW IHPC Regional Program?**

## Meeting Objective #2

**Overview of the 2016/17 strategic priorities of the  
WW IHPC Regional Program**

**2016/17 WWLHIN Annual Business Plan Hospice Palliative Care Initiatives**

**2016/17 WWIHPC Regional Program Council Priorities**

Improve access for care teams to support patients’ comfort measures at end-of-life.

- Centralization and streamline access to WW IHPC community based services
- Consistent, 24/7 access and bed management processes/criteria for all WWLHIN palliative care beds

Enhance community care and pain management options to reduce unnecessary deaths in hospital

- Enhance support for primary care providers to build palliative care capacity
- Consistent HPC delivery in all WW LTCHs
- Review select regional HPC policies & standards.

Support residents, providers, & caregivers in planning for end-of-life through access to resources and supports

Develop and implement a WWLHIN-wide mechanism and process for individual wishes to be documented & communicated – WW IHPC ACP policy and common tools.



# WW IHPC Regional Program Work Plan

## **Other System Priorities**

- Participate in the development of a regional process to respond to requests for MAID
- Use data to identify variations in patient outcomes across WW sub-regions (i.e. Guelph, Wellington, Waterloo, Cambridge)
- Collect front line feedback and input to understand opportunities to improve clinical practices, processes, resources and outcomes by sub-region



# Ontario Palliative Care Network **Discussion**

*What are key opportunities to improve HPC patient/caregiver experience and outcomes in WW?*

*What are key opportunities to improve HPC clinical practices, processes, resources and outcomes in WW?*

**Ontario  
Palliative Care  
Network**



***Emmi Perkins***

*Director, Waterloo Wellington Integrated Hospice*

*Palliative Care Regional Program*

*[emmi.perkins@ww.ccac-ont.ca](mailto:emmi.perkins@ww.ccac-ont.ca)*

*T: 226.220.8658*

**Ontario  
Palliative Care  
Network**



[www.wwpalliativecare.ca](http://www.wwpalliativecare.ca)