

*Waterloo Wellington
Integrated Hospice Palliative Care Regional Program Council*
Terms of Reference

Vision of the Integrated Hospice Palliative Care Regional Program

Excellent hospice palliative care (HPC) services will be accessible to the people of Waterloo Wellington Local Health Integration Network (WWLHIN), regardless of diagnosis or care setting, consistent with the Canadian Hospice Palliative Care Association Model¹ (CHPCA).

1. Background and Guiding Principles

The role of the Ontario Palliative Care Network and the Regional Palliative Care Programs is to ensure implementation of 'The Declaration of Partnership' priorities at both the provincial and regional levels and as such embraces the following principles outlined in the Declaration:

- Improve access to hospice palliative care in the community
- Provide more support for primary care providers
- Improve hospice palliative care for those who are in their last year of life, including those with advanced chronic disease
- Work to raise awareness of hospice palliative care in general
- Improve quality of care by optimizing the best of what is currently available while building for the future

Additional principles include:

Provincial Alignment – Regional Palliative Care Networks/Programs will advance provincial direction at the planning, implementation and delivery levels

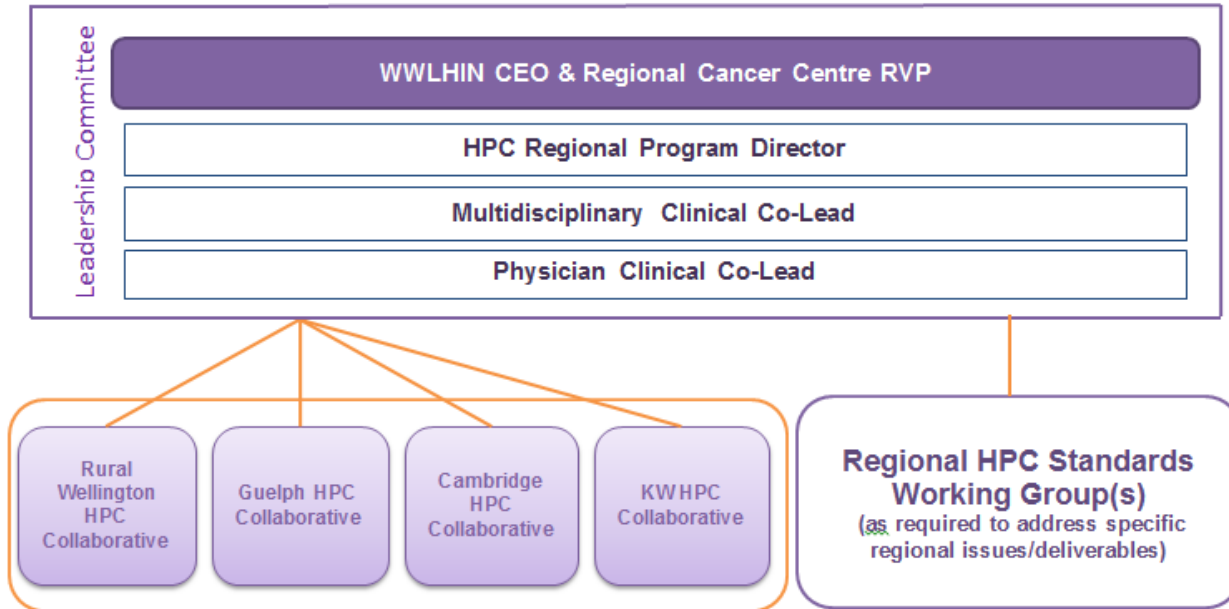
Equity – Regions will plan for distinct geographies and populations in their LHIN in alignment with provincial direction

Family and Caregiver Engagement – Regions will partner with patients and caregivers in designing plans, programs and services initiatives. Patients/caregivers will be included in Regional Palliative Care Networks structure through mechanisms such as patient councils, leadership, etc. Broad public awareness will be planned for provincially and occur in partnership with Regional Palliative Care Networks/Programs.

The Waterloo Wellington Integrated Hospice Palliative Care Regional Program is supported by the joint leadership of the WW LHIN CEO (or delegate) and the Regional Cancer Program RVP who will provide leadership to ensure accountability and alignment of activities in their region to provincial and regional directions. Figure 1 illustrates the WW IHPC Regional Program Structure.

Figure 1 - WW IHPC Regional Program Structure

WW HPC Integrated Clinical Council Structure



2. Mandate of Each Sub-Region Hospice Palliative Care Collaborative

Each Sub-Region Hospice Palliative Care Collaborative will:

- Be supported by the WW IHPC Leadership Committee
- Include flexible representation from relevant sub-region partners/ stakeholders
- Represent the voice of sub-region HPC providers and other relevant partners/stakeholders to identify sub-region hospice palliative care needs & priorities
- Identify (to the WW IHPC Leadership Committee) quality improvement, change management & communication tools required to execute / implement standards and priorities within the sub-region
- Provide leadership at the sub-region level to support/inform implementation of the WWIHPC Regional Program strategic vision, clinical standards and annual regional program priorities

Regional WW Hospice Palliative Care Standards Working Group(s) will be established on an as-needed-basis to develop plans to consistently implement priority initiatives and HPC standards of care within/across the WW IHPC Regional Program. These regional HPC Standards Working Groups will:

- include membership from sub-region HPC Collaboratives and other relevant partners & stakeholders
- Be led/supported by the WW IHPC Regional Program Director, Clinical Co-Leads & Regional Pain & Symptom Management Consultants